



Island Associates Real Estate Inc.

We create value

## Office Suites Available

490 Wheeler Rd.  
Hauppauge, NY



**Roger A. Delisle, Jr. CCIM**  
[Roger@IslandAssociates.com](mailto:Roger@IslandAssociates.com)



**Robert Monahan**  
[Robert@IslandAssociates.com](mailto:Robert@IslandAssociates.com)

**Robert Raffa**  
[Raffa@IslandAssociates.com](mailto:Raffa@IslandAssociates.com)

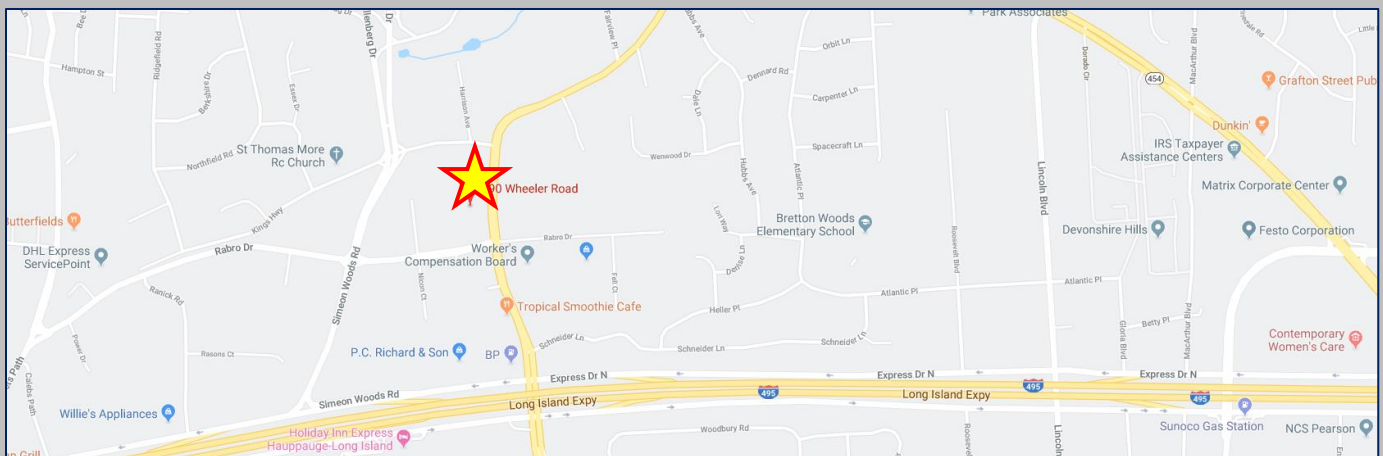
444 Rte. 111, Suite 1 Smithtown, NY 11787 . 631 982-2100 [www.IslandAssociates.com](http://www.IslandAssociates.com)

# Property Info

## Office Space Available

Lease Price: \$23.00-\$26.00 SF + Electric (\$3.75 SF)

Suite #	Floor	Available SF
#101	1 <sup>st</sup>	1,979
#102	1 <sup>st</sup>	2,826
#175	1 <sup>st</sup>	3,833
#290	2 <sup>nd</sup>	1,390



- ❖ Newly renovated parking garage with electric vehicle charging stations
- ❖ Onsite security
- ❖ Easy access to the Long Island Expressway
- ❖ 20 minutes to Long Island MacArthur Airport
- ❖ 7 minutes to LIRR Smithtown Station
- ❖ Area restaurants include NOSH Kitchen & Cocktails, La Strada, Butterfields & More.

*All information is subject to errors, omissions, modification, and withdrawal.  
Information is from sources deemed to be reliable but should not be relied upon without independent verification.*



# Pictures



*All information is subject to errors, omissions, modification, and withdrawal.  
Information is from sources deemed to be reliable but should not be relied upon without independent verification.*

## Pictures

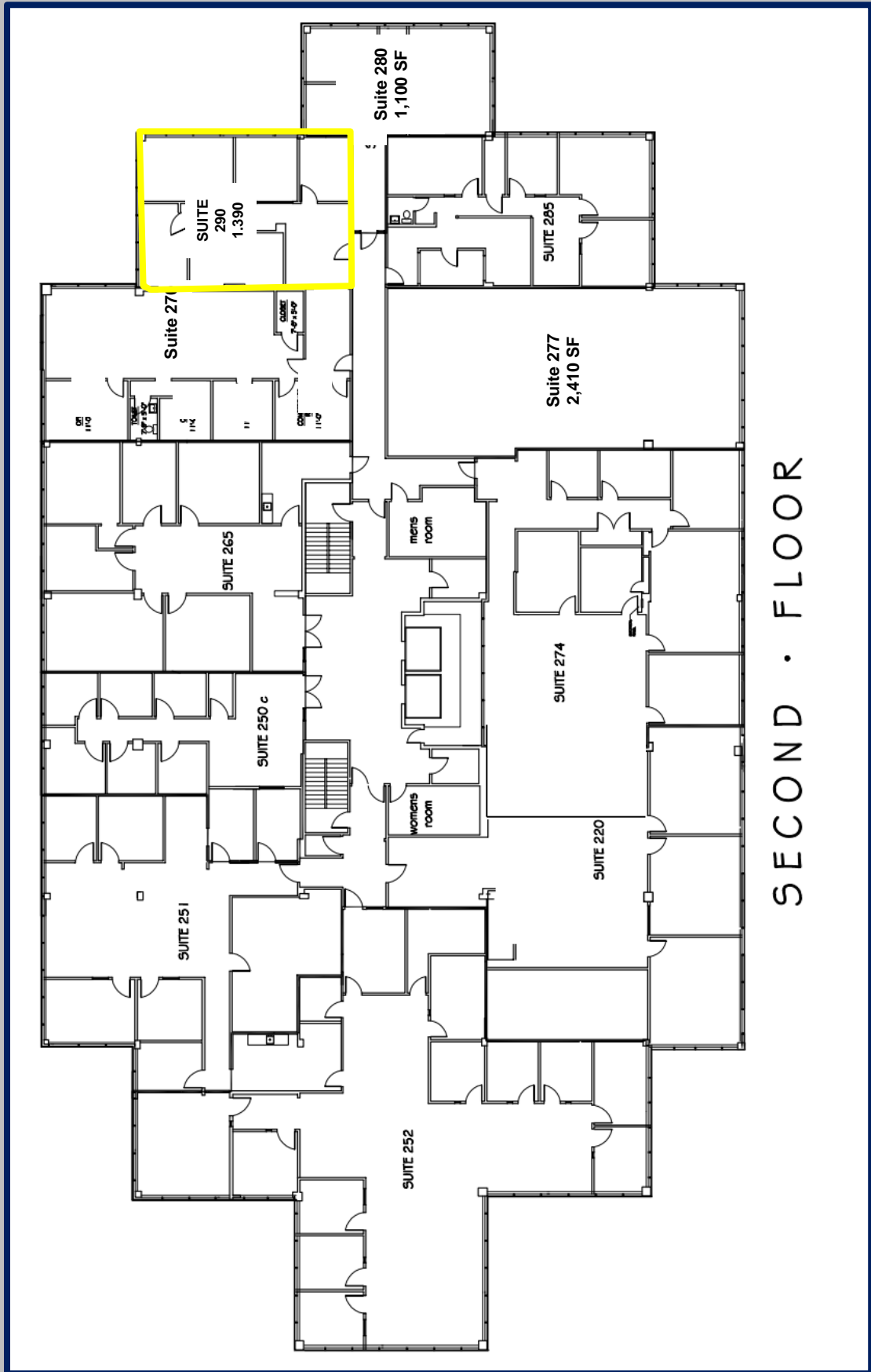


*All information is subject to errors, omissions, modification, and withdrawal.  
Information is from sources deemed to be reliable but should not be relied upon without independent verification.*

[illegible]

*All information is subject to errors, omissions, modification, and withdrawal.  
Information is from sources deemed to be reliable but should not be relied upon without independent verification.*

# Second Floor Plan



All information is subject to errors, omissions, modification, and withdrawal.

Information is from sources deemed to be reliable but should not be relied upon without independent verification.